

Agenda Item 6B

**DONNER SUMMIT
PUBLIC UTILITY DISTRICT
WASTEWATER AND FRESH WATER
TREATMENT PLANTS
END OF MONTH OPERATIONS AND MAINTENANCE
SUMMARY**

March 2026

Donner Summit Public Utility District Waste Water Flow Data

MONTH OF March 2026		DSPUD Influent	SLCWD Influent	Total Plant Influent	Total Plant EFF River	Total Plant EFF Snow Storage	Total Plant EFF Snow Delivery	DSPUD Fresh Water Treated	SLCWD Fresh Water Treated	Weather	Comments
DATE	DAY	MGD	MGD	MGD	MGD	MGD	MGD	MGD	MGD	Cond	
03/01/26	SUN	0.2662	0.1348	0.4010	0.4260			0.094	0.0492	Clear	
03/02/26	MON	0.2467	0.1123	0.3590	0.4150			0.098	0.0631	Clear	
03/03/26	TUE	0.2306	0.1134	0.3440	0.5430			0.082	0.0901	Clear	
03/04/26	WED	0.2276	0.0884	0.3160	0.3190			0.079	0.0721	Cloudy	
03/05/26	THU	0.2056	0.0824	0.2880	0.3260			0.054	0.0449	Clear	
03/06/26	FRI	0.2268	0.0802	0.3070	0.3080			0.077	0.0000	Clear	
03/07/26	SAT	0.2399	0.0941	0.3340	0.3120			0.083	0.0000	Clear	
03/08/26	SUN	0.2325	0.0925	0.3250	0.2890			0.081	0.0000	Clear	
03/09/26	MON	0.2613	0.0817	0.3430	0.2970			0.067	0.0966	Clear	
03/10/26	TUE	0.2098	0.0912	0.3010	0.3470			0.079	0.0719	Clear	
03/11/26	WED	0.2529	0.0611	0.3140	0.2870			0.055	0.0801	Clear	
03/12/26	THU	0.2334	0.0806	0.3140	0.3060			0.063	0.0724	Clear	
03/13/26	FRI	0.2944	0.0856	0.3800	0.3650			0.092	0.0000	Clear	
03/14/26	SAT	0.2438	0.1022	0.3460	0.2900			0.061	0.0550	clear	
03/15/26	SUN	0.2855	0.0985	0.3840	0.3450			0.069	0.0431	Clear	
03/16/26	MON	0.3015	0.1075	0.4090	0.3350			0.072	0.0422	Clear	
03/17/26	TUE	0.2799	0.0881	0.3680	0.3350			0.125	0.0000	Clear	
03/18/26	WED	0.2805	0.1075	0.3880	0.3480			0.105	0.0461	Clear	
03/19/26	THU	0.2669	0.0961	0.3630	0.3450			0.078	0.1119	Clear	
03/20/26	FRI	0.3178	0.0972	0.4150	0.3340			0.061	0.0000	Clear	
03/21/26	SAT	0.3781	0.1149	0.4930	0.4350			0.090	0.0000	Clear	
03/22/26	SUN	0.2200	0.1050	0.3250	0.3050			0.058	0.0000	Clear	
03/23/26	MON	0.2434	0.0956	0.3390	0.3180			0.055	0.0739	Clear	
03/24/26	TUE	0.2266	0.0914	0.3180	0.2940			0.062	0.0645	Clear	
03/25/26	WED	0.2162	0.0878	0.3040	0.2750			0.059	0.0503	Clear	
03/26/26	THU	0.1978	0.0862	0.2840	0.2500			0.037	0.0375	Clear	
03/27/26	FRI	0.2416	0.0874	0.3290	0.3020			0.104	0.0000	Clear	
03/28/26	SAT	0.2075	0.0925	0.3000	0.2760			0.056	0.0000	Clear	
03/29/26	SUN	0.1820	0.0860	0.2680	0.2530			0.052	0.0000	Clear	
03/30/26	MON	0.1721	0.0869	0.2590	0.2370			0.059	0.0791	Clear	
03/31/26	TUE	0.1634	0.1036	0.2670	0.2610			0.078	0.0667	Rain	
3/2026 Daily Totals		7.5527	2.9323	10.4850	10.078	0.000	0.000	2.285	1.3108	2025	0" Snow
3/2026 Totalizer Total		7.5257	2.9323	10.4580	10.078	0.0000	0.000	2.285	1.3108		60" Snow
Difference		-0.0270	0.00003	-0.0270	0.0000	0.0000	N/A	0.0000	0.0000		
Percentage Difference		-0.36%	0.001%	-0.258%	0.000%	#DIV/0!	N/A	0.000%	-0.002%		
3/2026 AVG/DAY		242,765	94,590	337,355	325,097	0	0	73,710	42,284		
Percentage Flow SLCWD			28.039%								
3/2025 Totalizer Total		7.10520	2.24080	9.3460	8.602	0.000	0.000	6.1400	1.230268		
3/2025 AVG/DAY		229,200	72,284	301,484	277,484	0	0	198,065	39,686		
Percentage Flow SLCWD			23.976%								

Donner Summit Public Utility District WWTP & WTP End of Month Operations and Maintenance Summary

Prepared for: Steve Palmer, General Manager

Prepared by: Jim King, Plant Manager

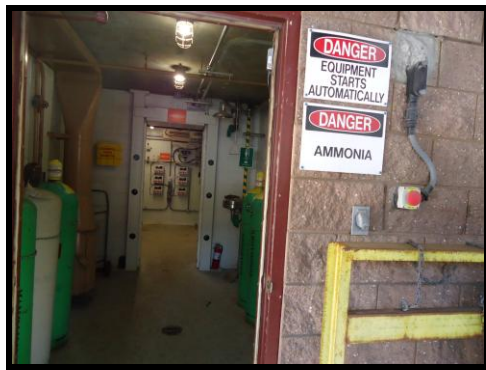
Date: March 2026

Operations WWTP

- ◆ Discharged 10.5 MG to the river.
- ◆ Discontinued providing snow making recycled water for the season. Drained back storage tank and supply line to the headworks for retreatment.



- ◆ Returned water to the headworks from EQ storage tank #2.
- ◆ Decanted 6' of clear water from the solids holding tank to the headworks for retreatment.
- ◆ Discontinued ammonia feed due to changing loads to the plant.



- ◆ Renewed the EPA hazardous waste permit for 2026 and completed the report for 2025.
- ◆ Some staff members attended the California Water Environmental Association Sierra Section Awards Dinner in Reno.



- ◆ Staff continued to work on the Nevada Co. Hazardous Materials Business Plan.

Operations Water Plant

- ◆ Completed and sent out monthly potable water reports to DDW.
- ◆ Staff completed both Electronic Annual Reports (EAR) for Soda Springs and Big Bend water systems.
- ◆ Staff dealt with a discolored water complaint in and around the Lola Montez service area. Staff spend time flushing out the system in the area and at all dead-end lines. It is unknown what might have caused the issue, but it is believed to be from sudden water temperature changes breaking something free (rust) in the line.



- ◆ Installed water meter at 21084 Donner Pass Rd.

- ◆ Conducted a flow test on the fire hydrant by the Pacific Crest Trail Head.
- ◆ Continued tracking the active water level of Lake Angala.

Date	Water Surface Elevation		Storage (MG)	
	2025	2026	2025	2026
Jan	7183.5	7189.0	66.5	80.0
Feb	7187.0	7189.3	74.0	82.0
March	7187.0	7192.2	74.0	88.0
April				
May				
June				
July				
Aug				
Sept				
Nov				
Dec				

Repairs and Maintenance WWTP

- ◆ Staff began repair work on reactor blower #3.



- ◆ Staff worked on one of the soda ash silo feeder boxes that stopped. After disassembly an old piece of tape or plastic was discovered caught in the gears. Removed and returned to service.



- ◆ Assisted Caterpillar Service with repairs and inspection of the standby generators at the plant. A small vacuum leak was located on Generator #2 fuel line and repaired.



- ◆ Replaced repaired membrane exhaust fan.



- ◆ Unplugged the polymer shack floor drain due to normal use polymer spills.



- ◆ Replaced failed bulb in the membrane Skid-1 turbidity meter.

Repairs and Maintenance WTP

- ◆ Had the automatic valve at the chlorine monitoring station looked at by contractor. Found failed battery in the PLC. Replaced the battery and put back into automatic mode.
- ◆ Installed a hose reel on the F-250 service truck.

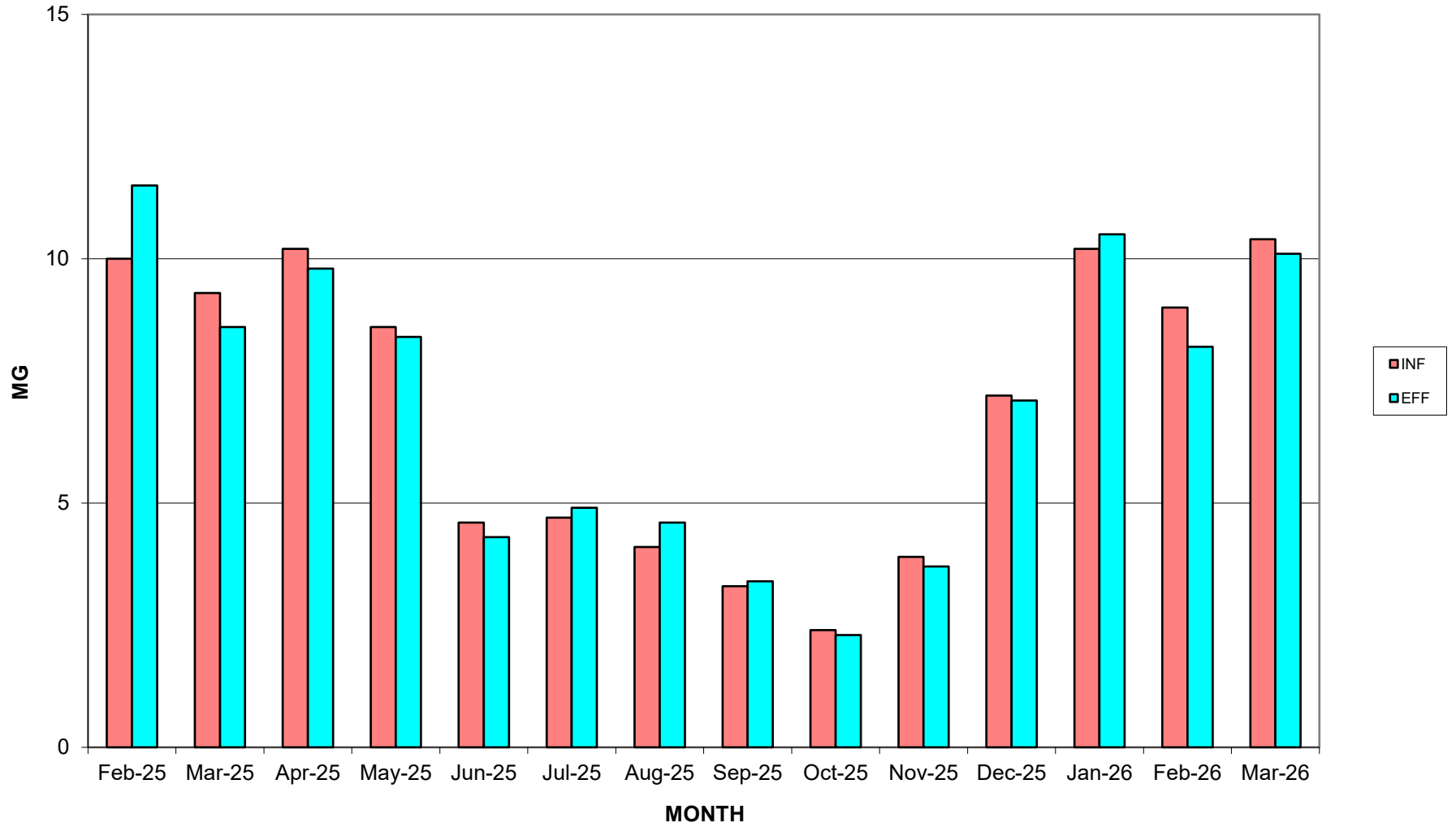


Laboratory

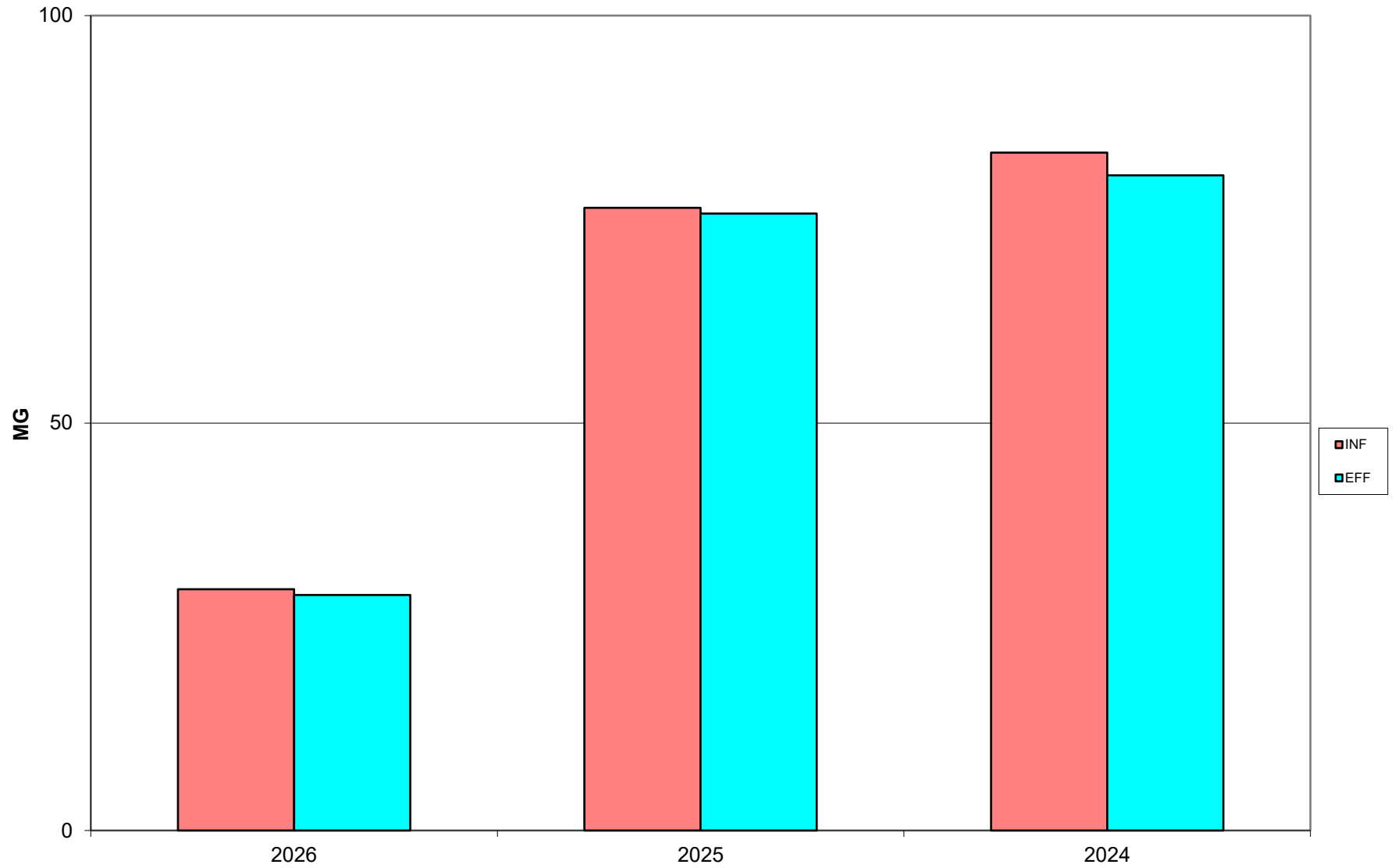
- ◆ Continued river discharge testing.
- ◆ Discontinued snow water storage testing.

DONNER SUMMIT PUD WWTP

**TOTAL INFLUENT FLOW TO TOTAL
EFFLUENT FLOW YEAR 2025/2026**



**DONNER SUMMIT PUD WWTP ANNUAL TOTAL INFLUENT FLOW TO TOTAL EFFLUENT FLOW
2026 DATA THROUGH MARCH**



**DONNER SUMMIT PUD WWTP AVG EFFLUENT FLOW TO SNOW
STORAGE/PRODUCTION
YEARS 2025/2026**

