

**RECORDING REQUESTED BY:**

Goodwin Consulting Group



PLACER, County Recorder  
RYAN RONCO  
DOC- 2024-0012528-00  
0029

FRIDAY, MAR 8, 2024 02:20 PM  
MIC \$3.00 | AUT \$0.00 | SBS \$0.00  
ERD \$0.00 | SB2 \$0.00 | MAP \$5.00  
ADD \$0.00

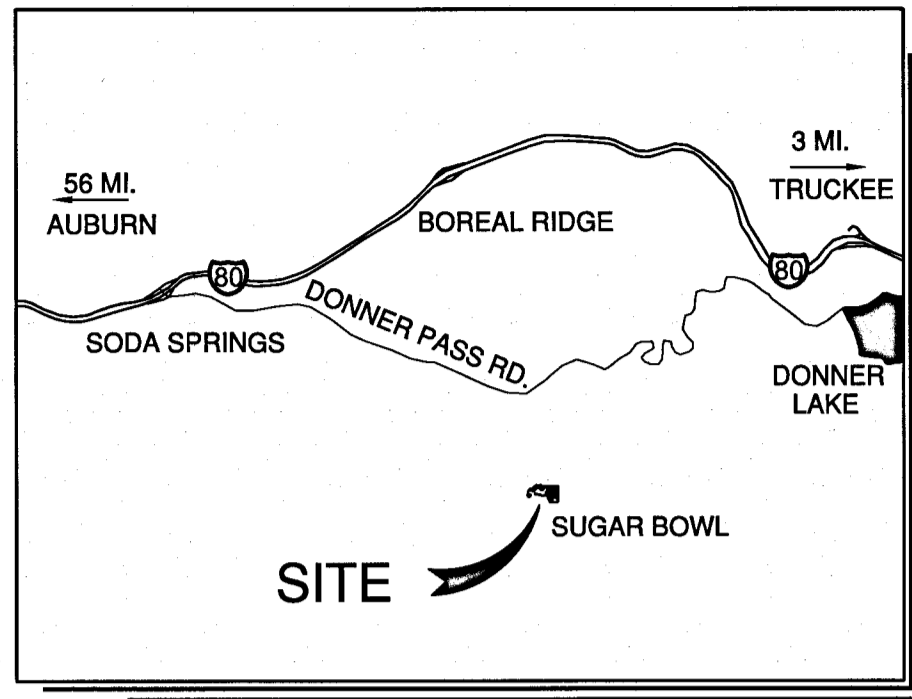
Ttl Pd \$8.00 Rcpt # 03305084  
CLK9L8K8V3/MB/1-1

TYPE OF MAP: Community Facilities District Map

BOOK: 5 PAGE: 4

NAME: Donner Summit Public Utility District  
Community Facilities District No. 2024-1  
(Sewer Extension)

NO. OF SHEETS: 1



VICINITY MAP  
N.T.S.

PROPOSED BOUNDARIES OF  
**DONNER SUMMIT PUBLIC UTILITY DISTRICT  
COMMUNITY FACILITIES DISTRICT NO. 2024-1  
(SEWER EXTENSION)**  
PLACER COUNTY, STATE OF CALIFORNIA

SECRETARIE'S MAP FILING STATEMENT

FILED IN THE OFFICE OF THE SECRETARY OF THE BOARD OF DIRECTORS OF THE DONNER SUMMIT PUBLIC UTILITY DISTRICT, PLACER COUNTY, STATE OF CALIFORNIA, THIS 20<sup>th</sup> DAY OF January, 2024.

*Dawn Parkhurst*  
DAWN PARKHURST  
SECRETARY OF THE BOARD OF DIRECTORS  
DONNER SUMMIT PUBLIC UTILITY DISTRICT

SECRETARIE'S MAP CERTIFICATE

I HEREBY CERTIFY THAT THE WITHIN MAP SHOWING PROPOSED BOUNDARIES OF COMMUNITY FACILITIES DISTRICT NO. 2024-1 (SEWER EXTENSION), PLACER COUNTY, STATE OF CALIFORNIA, WAS APPROVED BY THE BOARD OF DIRECTORS OF DONNER SUMMIT PUBLIC UTILITY DISTRICT AT A MEETING THEREOF, HELD ON THE 20<sup>th</sup> DAY OF January, 2024, BY ITS RESOLUTION NO. 2024-02.

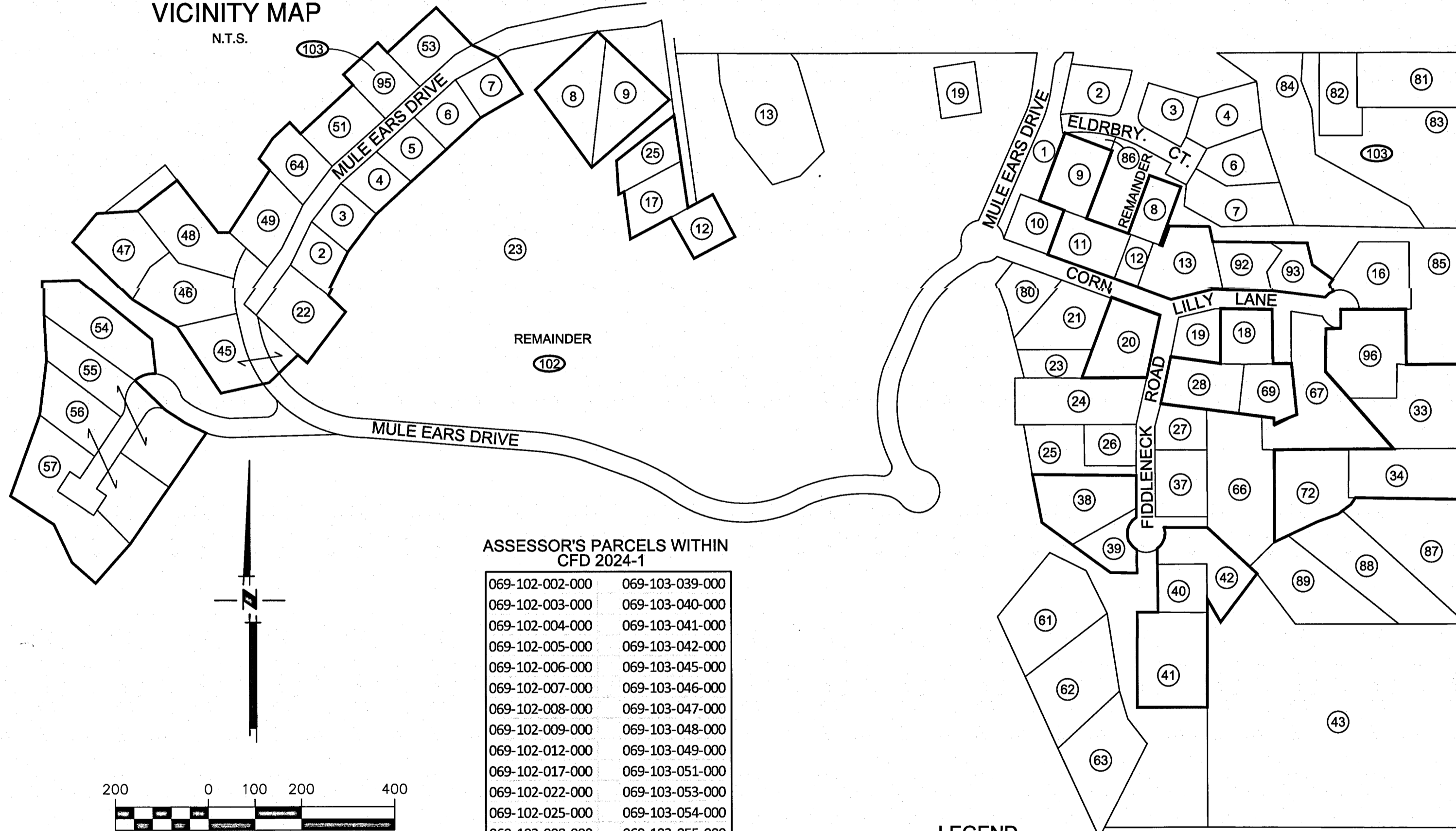
*Dawn Parkhurst*  
DAWN PARKHURST  
SECRETARY OF THE BOARD OF DIRECTORS  
DONNER SUMMIT PUBLIC UTILITY DISTRICT

RECORDER'S STATEMENT

FILED THIS 6<sup>th</sup> DAY OF March, 2024 AT THE HOUR OF 1:10 O'CLOCK P M, IN BOOK 5 OF MAPS OF COMMUNITY FACILITIES DISTRICTS AT PAGE 4 IN THE OFFICE OF THE COUNTY RECORDER OF THE COUNTY OF PLACER, STATE OF CALIFORNIA.

FEE \$8.00  
FILE NO. 2024-0012518

RYAN RONCO  
PLACER COUNTY RECORDER  
*M.B.*  
DEPUTY



ASSESSOR'S PARCELS WITHIN  
CFD 2024-1

069-102-002-000	069-103-039-000
069-102-003-000	069-103-040-000
069-102-004-000	069-103-041-000
069-102-005-000	069-103-042-000
069-102-006-000	069-103-045-000
069-102-007-000	069-103-046-000
069-102-008-000	069-103-047-000
069-102-009-000	069-103-048-000
069-102-012-000	069-103-049-000
069-102-017-000	069-103-051-000
069-102-022-000	069-103-053-000
069-102-025-000	069-103-054-000
069-103-008-000	069-103-055-000
069-103-009-000	069-103-056-000
069-103-011-000	069-103-057-000
069-103-012-000	069-103-064-000
069-103-013-000	069-103-069-000
069-103-018-000	069-103-072-000
069-103-020-000	069-103-092-000
069-103-028-000	069-103-093-000
069-103-033-000	069-103-095-000
069-103-034-000	069-103-096-000
069-103-038-000	

LEGEND

- 103 ASSESSOR'S PAGE NUMBER
- 56 ASSESSOR'S PARCEL NUMBER (MAP INDEX)
- 069-103-056-000 ASSESSOR'S PARCEL NUMBER
- ASSESSOR'S PARCEL LINE
- CFD 2024-1 BOUNDARIES

NOTE:

REFERENCE IS HEREBY MADE TO THE MAPS AND DEEDS OF RECORD IN THE OFFICE OF THE ASSESSOR OF THE COUNTY OF PLACER FOR THE DETAILED DESCRIPTION OF THE LINES AND DIMENSIONS OF ANY PARCELS SHOWN HEREON.



**GCG**  
GOODWIN CONSULTING GROUP